



QUEEN'S CROFT HIGH SCHOOL

Birmingham Road
Lichfield
WS13 6PJ
Telephone: 01543 227245
Email: office@queenscroft.staffs.sch.uk

WEEKLY NEWSLETTER

8th November 2019 Headteacher: Mr Peter Hawksworth

KEY DIARY DATES

November 2019

15th Non-Uniform 'Bring Chocolate'.
19th KS4 Consultation and Careers event
22nd Quiz and Curry Night 7:30-9:30pm

December 2019

14th Shop and Drop 9:00am-12:00pm
18th Christmas Lunch
19th Carol Service
20th Pantomime
End of Term

January 2020

6th School Opens
30th PSHE Theme Day
31st INSET

INSET DATES

31st January 2020
26th June 2020
20th July 2020

Office Hours

Please be aware that the school office is open between 8:30am and 4:00pm. Any queries outside of these hours can be emailed into the school office or alternatively please leave a message on the answer machine.

Weekly Word Workout

Good luck with this week's Weekly Word Workout. How many words do you think you can create that have 4 or more letters?

U	K	E	W
L	L	N	H
V	T	T	B
D	G	I	E

Mrs Ratcliffe; Reading, Writing and Communications Co-Ordinator.

Medication

Please be aware that an *adult* must sign all medication into the school office at the start of the day. If this medication is to go home at the end of the day, an adult must sign it out. Please do not send your child in with any medication.

Thank You

I just wanted to say a huge 'thank you' to everyone who contributed to the Christmas shoe box appeal this year! I am very grateful for the support, as I am sure the families and older people will be when they receive such wonderful gifts. I was able to send 27 completed boxes off to the Link to Hope charity at the week end.



Mrs Ulanowski, TA.

Maths

The month of November signals a month of bar models!

Bar modelling is a versatile visual strategy that can be used across a wide range of concepts and topics. It provides students with a strategy that they can adapt for increasingly difficult problems. Bar modelling draws on the concrete, pictorial and abstract approach. It allows pupils to understand on a conceptual level what occurs when using complex formulas (for example, algebra).

In maths, we are challenging ourselves to incorporate bar models to support our learning as part of 'Barvemember'. At times we are finding this difficult but we are all showing super perseverance and having a go!

Mrs Bradbury, Maths Co-Ordinator and Post-16 Pastoral Lead.

BARVEMBER

1 Jess has 80 stickers.
Liam has 12 stickers.
Jess gives Liam 25 stickers.
How many more stickers than Liam does Jess have now?

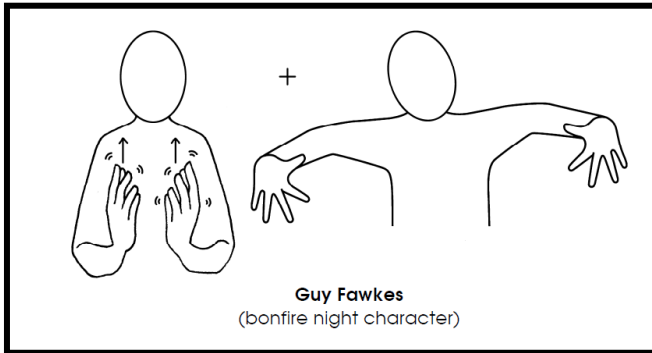
Jess 80

Liam 12

Makaton Sign of the Week

This week's sign is Guy Fawkes!

Join in with our Sign of the Week. Make and share your own video using the hashtag #wetalkmakaton to appear on our video wall on wetalkmakaton.org.



We have provided you with these signs and/or symbols free of charge, with your help The Makaton charity can help more people communicate, please donate online at justgiving.com/Makaton.

Makaton Symbols and Signs graphics © The Makaton Charity 2019
makaton.org

Sickness

For sickness and diarrhoea please be aware we have a 48 hour rule. This means children will not be allowed to school for 48 hours after the last bout of illness.

Headlice

We have had some cases of headlice in school. If you find your child has headlice and are unsure how to treat it, please refer to <http://nhs.uk/Conditions/Head-lice>.

Teachers2Parents

We are going paperless! From Monday 11th November, Newsletters and various other paper correspondence will be e-mailed via Teachers2Parents. Please could you ensure we have your correct email address or if you have not provided one, please send this to office@queenscroft.staffs.sch.uk

Anti-Bullying Week

Next week is Anti-Bullying week for those that are interested Smiggle are giving away free 'BE KIND' key rings to support Anti-Bullying.

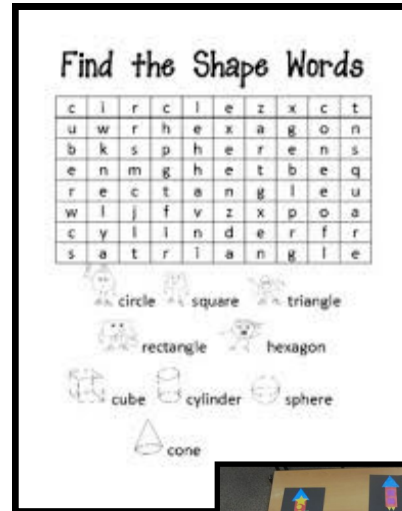


Mrs Gregory, 7B Form Tutor.

7B Shapes

7B are looking at 2D/3D shape and their properties this week. On Tuesday they made firework pictures using 2D shapes to represent Bonfire Night.

Have a go to see if you can find the shape words.



Mrs Gregory, 7B Form Tutor

Quiz and Curry Night

Please be aware that the Quiz and Curry Night planned below requires payment by Tuesday 19th November. Unfortunately, we will not be allowing payment on the night; on the grounds of I am unable to cater last minute.

Mr Zaman, Chairman, Friends of Queen's Croft.

CURRY & QUIZ FAMILY NIGHT

Friday 22nd November
7.00pm start at Queens Croft High School

Our very own Mr. Zaman will be master chef for the evening.

Licensed Bar

There will be a vegetarian food option available
Tickets £7 adults & £3 for children

All parents, carers and staff welcome.

It would be great to meet new parents and carers!

