



QUEEN'S CROFT HIGH SCHOOL

Birmingham Road
Lichfield
WS13 6PJ
Telephone: 01543 227245
Email: office@queenscroft.staffs.sch.uk

WEEKLY NEWSLETTER

18th October 2019

Headteacher: Mr Peter Hawksworth

KEY DIARY DATES

October 2019

21st Friends' Movie Night 3:30-6:00pm
25th School closes for Half Term
PSHE Theme Day
Non-Uniform 'Bring a Bottle'.

November 2019

4th School Opens
15th Non-Uniform 'Bring Chocolate'.
19th KS4 Consultation and Careers event
22nd Quiz and Curry Night 7:30-9:30pm

December 2019

14th Shop and Drop 9:00am-12:00pm
18th Christmas Lunch
19th Carol Service
20th Pantomime
End of Term

January 2020

6th School Opens

INSET DATES

31st January 2020
26th June 2020
20th July 2020

Reminder!

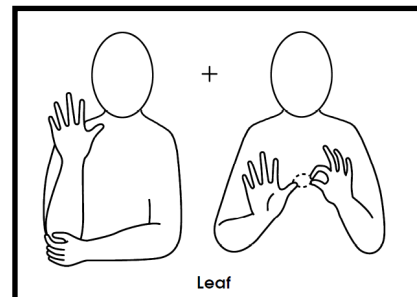
Thank you to those who have already paid for the Pantomime. If your payment is outstanding, please pay via ParentPay by the beginning of next week.

Mrs Gregory, Class Teacher

Makaton Sign of the Week

This week's sign is Leaf!

Join in with our Sign of the Week. Make and share your own video using the hashtag #wetalkmakaton to appear on our video wall on wetalkmakaton.org.



We have provided you with these signs and/or symbols free of charge, with your help The Makaton charity can help more people communicate, please donate online at justgiving.com/makaton.

Makaton Symbols and Signs graphics © The Makaton Charity 2019
makaton.org

Black History Month

Nurture group have been learning about Inventors of Colour for Black History month. They have researched their own material and produced a poster with their findings.

Madam C. J. Walker (1867-1919) was lauded as "the first black woman millionaire in America" for her successful line of hair care products. Born Sarah Breedlove, she was widowed by age 20 and took work as a laundress.

George Washington Carver (1860s – January 5, 1943) was an American agricultural scientist and inventor. He actively promoted alternative crops to cotton and methods to prevent soil depletion.



Mrs Rainbow, Nurture Group TA.



CONSENT FORM

I do/do not wish for _____ to attend The Queenscroft Movie Night.

I enclose

Signed: _____ Parent/Carer

Contact Number: _____

If the parent/caror picking up is different from above please give details:

Name: _____ Contact Number: _____



Weekly Word Workout

Good luck with this week's Weekly Word Workout. This week I have added an extra blank row for you to add your own letters in. What letters will you add? Do you think it will be easier or harder to create words with more letters? As always, remember to let me know your results!

D	M	E	N
W	Y	G	B
R	R	D	P
E	T	J	O

Mrs Ratcliffe

Reading, Writing and Communication Coordinator.

Mental Health Awareness Week

On Thursday 10th October as part of Mental Health Awareness Day 7B started the day with a run followed by a healthy snack of melon, pineapple and bananas.



We then discussed all the ways we can look after our mental health. Here are some of the ideas the pupils came up with -

- Having a good night sleep
- Exercise
- Eating healthy
- Talking to friends and family about how we feel
- Taking time out to relax
- Caring for others
- Smiling
- Make people laugh by telling jokes

We ended our day with some relaxation.

Mrs Gregory

7B Form Tutor



PCSO Visit

This week we had a visit from a local PCSO and staff from New Era to discuss relationships and domestic abuse with some of our key stage 4 and key stage 5 pupils. New Era is a new holistic domestic abuse service operating across Staffordshire, who specialise in support and also educating pupils in schools. During the session pupils discussed gender stereotyping and expectations when in a relationship. I was very impressed with the maturity shown by our pupils, who showed great understanding and thought when presenting their opinions on some serious issues. Well done.

Mr Capewell
Head of KS4



Car Parking—Polite Request

We have recently received feedback from some residents in St John's close who have stated they are being blocked in by parents parking across their driveways. Please be mindful of this when parking in the locality.

Mrs Hesslegrave, Business Manager

Food Technology Plastic Containers

Please could you send your child into school with a plastic container when they have a food technology lesson. Thank you for your support.



Mrs Underwood, HLTA Food Tech

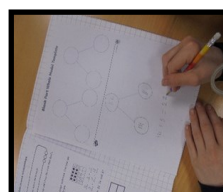
70 Maths

This week, pupils in 70 have been using equipment to explain why addition and subtraction are inverses and using this to check calculations and solve missing number problems. They then wrote some of their own sentences and drew and made models to go with them.

Amelia is getting confused! Can you help her work out what she has forgotten?

I've just spent £24 on a boat trip and now have £14 left. How much money did I bring out with me?

£ ____ - £24 = £14



Mrs Knights, Class Teacher