



QUEEN'S CROFT HIGH SCHOOL

Birmingham Road
Lichfield
WS13 6PJ
Telephone: 01543 227245
Email: office@queenscroft.staffs.sch.uk

WEEKLY NEWSLETTER

20th September 2019

Headteacher: Mr Peter Hawksworth

KEY DIARY DATES

September 2019

25th Year 6 open morning

October 2019

4th School Photographs

25th School closes for Half Term

PSHE Theme Day

November 2019

4th School Opens

19th KS4 Consultation and Careers event

December 2019

18th Christmas Dinner

19th Carol Service

20th Pantomime

End of Term

January 2019

6th School Opens

30th PSHE Theme Day

INSET DATES

31st January 2020

26th June 2020

20th July 2020

No dogs on site!

Some of our students may find the presence of dogs in the playground and school grounds stressful, even frightening, and even well-behaved dogs can behave unpredictably when placed in a busy, noisy and crowded environment. We also have many students with severe allergies to fur. Please refrain from bringing dogs on our school site for the safety of our pupils.

Word Workout

Good luck with this week's Weekly Word Workout! If you feel like you want an additional challenge then why not set a time limit for when you are finding words? Or maybe you would only like to find words that contain more than 4 letters? Remember to let me know how you get on!

K	O	I	I
L	E	M	S
W	C	T	H
D	U	S	A

Mrs Ratcliffe

Reading, Writing and Communication Coordinator.

South Staffs College Open Day

The Lichfield campus of South Staffs College is having an open evening on 23rd October, 5pm to 8pm. I encourage all pupils and parents in key stage 4 and 5 to go and have a look around if this is somewhere you may want to go to when you leave Queen's Croft.

I will be sending out information regarding open days for all the local colleges in the next few weeks, and we will also be having our careers evening on the 19th November where local colleges will be available in school for you to discuss potential courses and support to help with your transition. If you have any queries regarding colleges or need any further information please speak to me in school.

Mr Capwell, Head of KS4.

Friends of Queen's Croft

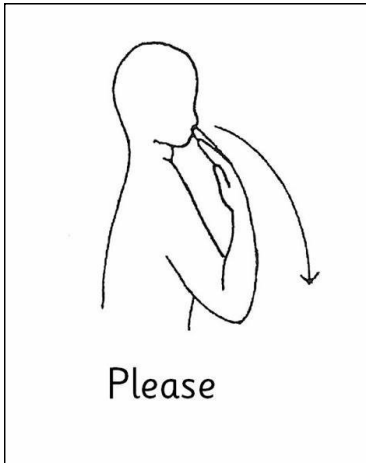
The Annual General Meeting of the Friends of Queen's Croft will take place at 7pm next Wednesday, 26th September in the Duke of York pub near Tesco in Lichfield. All parents, carers and interested community members are welcome to attend.



Makaton Sign of the Week

This week's sign is Please!

Join in with our Sign of the Week. Make and share your own video using the hashtag #wetalkmakaton to appear on our video wall on wetalkmakaton.org.



We have provided you with these signs and/or symbols free of charge, with your help The Makaton charity can help more people communicate, please donate online at justgiving.com/makaton.

Makaton Symbols and Signs graphics © The Makaton Charity 2019 makaton.org

Class C



This half term Class C are cooking using seasonal fruit. Last week they made apple crumble and this week apple scones, both made with fruit picked straight from the tree. Next week they will be making apple and blackberry pie. The children enjoy having a go at peeling, chopping, grating, measuring and mixing and it helps with fine motor skills and numeracy skills.

Rachel Holder, class teacher.

Thank You

We would like to say a big thank you for a recent donation received in memory of Edith Price, the Grandparent of one of our students. The donation will go towards enhancing the outdoor space for our students.



Maths



This week Post 16 group 3 have been using place value to improve their mental maths skills. They have worked on adding and subtracting 10s and 100s from three digit numbers. Have a go at the questions below to improve your mental maths skills.

Your three digit number is 527.

Can you add 10 to this number? Now subtract 10 from this number.

Make the number bigger by 100. Make the same number smaller by 100.

What is the biggest number you can make with the three digits?

What is the smallest number you can make?

Mrs Dawes, class teacher.

KS3—Class B

To launch Class 8B's new topic for this half-term, the children have designed and started to build their own volcanoes. They shall be continuing with this next week and then in science will learn how to make them erupt!



Mrs Pearce - Class 8B's teacher and Key Stage 3 Leader

PSHE

Next month we shall launch our series of PSHE theme days. There shall be one each half-term, as follows:

Friday 25th October 2019 - The Greatest Showman

Wednesday 4th November 2019 - Careers and Life Aspirations

Thursday 30th January 2020 - Health and Wellbeing

Tuesday 24th March 2020 - Road Safety

Monday 18th May 2020 - Online Safety