



# QUEEN'S CROFT HIGH SCHOOL

Birmingham Road  
Lichfield  
WS13 6PJ  
Telephone: 01543 227245  
Email: [office@queenscroft.staffs.sch.uk](mailto:office@queenscroft.staffs.sch.uk)

## WEEKLY NEWSLETTER

11th October 2019

Headteacher: Mr Peter Hawksworth

### KEY DIARY DATES

#### October 2019

16th Year 7 Parents / Carers coffee afternoon  
21st Friend's Movie Night 3:30-6:00pm  
25th School closes for Half Term  
PSHE Theme Day  
Non-Uniform 'Bring a Bottle'.

#### November 2019

4th School Opens  
15th Non-Uniform 'Bring Chocolate'.  
19th KS4 Consultation and Careers event  
22nd Quiz and Curry Night 7:30-9:30pm

#### December 2019

14th Shop and Drop 9:00am-12:00pm  
18th Christmas Dinner  
19th Carol Service  
20th Pantomime  
End of Term

#### January 2020

6th School Opens

#### INSET DATES

31st January 2020  
26th June 2020  
20th July 2020

### Reminder!

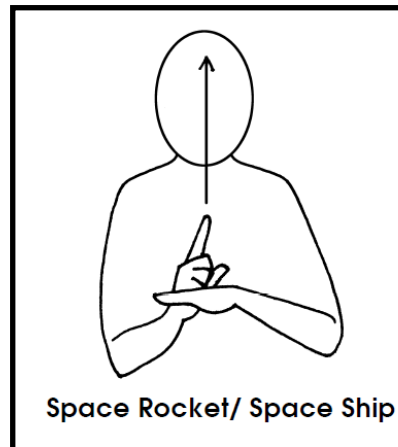
Can all parents please return the consent form to see the pantomime Cinderella ASAP. Letters can be handed in to the office or sent in with your child. Thanks!

*Mrs Gregory, Class Teacher*

### Makaton Sign of the Week

This week's sign is Space Ship!

Join in with our Sign of the Week. Make and share your own video using the hashtag #wetalkmakaton to appear on our video wall on [wetalkmakaton.org](http://wetalkmakaton.org).



Upward hand motion

Space Rocket/ Space Ship

We have provided you with these signs and/or symbols free of charge, with your help The Makaton charity can help more people communicate, please donate online at [justgiving.com/makaton](http://justgiving.com/makaton).

Makaton Symbols and Signs graphics © The Makaton Charity 2019  
[makaton.org](http://makaton.org)

### World Space Week 4th—10th Oct

World Space Week is an international celebration of space, science and technology, and their contribution to the betterment of the human condition. 7G held an assembly on Monday for Key Stage 3 informing them of all the planets and their order, who the first man on moon was and the important job the moon has for our tides. Can you work out the name of each of the planets from the anagrams below?

nesuv      smra      atrhe      enutenp  
rymuecr      arnsuu      srnuat      itpjure

*Mrs Sheerin, Class Teacher*

### Biscuit Sale!

As part of a class project, the Nurture group have decided to hold a fundraiser for Cancer Research. As a group, we have agreed that a biscuit sale for pupils would be a good event to have. The sale will be on Friday 18th October at break time in the Nurture room. Each biscuit will cost 10p with pupils only allowed to spend a maximum 50p.

*The Nurture Group*

## Friends Events



The Friends of Queens Croft will be holding the following events this term:

**Monday 21st October:** Movie Night -3:30 - 6:00pm

**Friday 25th October:** Bring a bottle -Non school uniform

**Friday 15th November:** Bring Chocolate - Non school uniform

**Friday 22nd November 2019:** Quiz & Curry Night at Queens Croft 7pm - 9:30pm

**Saturday 14th December:** Shop and Drop 9am -12:00pm

'Pennies Away' After half term will be collecting loose change as an on going class project. The class who raises the most money will be in for a prize.

Further details for the above events to follow

## Sports Science Y10

This week in BTEC Sport and Active leisure we have been looking at how the Circulatory system works and the passage of oxygenated blood and deoxygenated blood through the heart. We decided to turn the theory into a practical and did a practical demonstration of this in the gym using red cones and blue cones to illustrate the arteries and veins, blue balls to represent de-oxygenated blood and red balls to represent oxygenated blood. The passing of blood cells (balls) around the circuit was excellent and pupils were able to show great knowledge when the whistle blew and whoever was holding a blood cell (ball ) had to answer a question on the circulation system. Well done year 10.

**Mrs Grimshaw, Class Teacher**



## World Mental Health Day

Yesterday was World Mental Health Day. Children across the school learnt about looking after their mental health and ways in which they could do this. This is something we will be doing more work upon over the coming academic year.

**Mrs Pearce, PSHE and SRE co-ordinator**

## Post 16 Information Evening

On Tuesday 22nd October from 3.30pm to 4.30pm we will be holding an information evening for the parents of Post-16 students. This will enable us to share with you details of our current curriculum, exam programme and ways in which you can support your child. We hope as many parents as possible will be able to attend.

**Mr Hawksworth, Headteacher.**

## Achievement Assembly

We will be holding a celebration assembly in school on Friday 18th October for all pupils in school. We want to celebrate academic achievement but also anything amazing that our pupils have done outside of school. These could be sporting achievements, musical achievements or just about anything that they're proud of! So please send pupils in with any medals, trophies, certificates etc... and we can give them the recognition they deserve!

**Mr Capewell, Head of KS4**

## Reminder



## CONSENT FORM

I do/do not wish for \_\_\_\_\_  
to attend The Queenscroft Movie Night.

I enclose £

Signed: \_\_\_\_\_ Parent /Carer

Contact Number: \_\_\_\_\_

If the parent/carer picking up is different from above please give details:

Name: \_\_\_\_\_ Contact Number: \_\_\_\_\_

## Weekly Word Workout

Good Luck with this week's Weekly Word Workout! Feel free to challenge friends and family to see who can find the most words in a set amount of time.

G	P	W	S
O	K	D	S
I	E	T	T
O	L	I	U

**Mrs Ratcliffe**

**Reading, Writing and Communication Coordinator.**