

WEEKLY NEWSLETTER

11th May 2018

Headteacher: Mr Peter Hawksworth

KEY DIARY DATES

May 2018

14th - 17th Year 10 Hathersage Residential
14th - 18th Year 9 Standon Bowers Residential
21st Post-16 Open Evening
22nd Governors' TLSO Sub-Committee, 6.30pm
25th School closes for Half Term

June 2018

4th School opens
7th Race for Life
14th Awards Evening
20th Sports Day
21st Full Governors' Meeting, 6.30pm
21st Leavers' Assemblies
21st Leavers' Prom
22nd Annual Reviews (school closed for normal lessons)
27th Post-16 Summer Fayre, 12.45pm - 2.45pm

July 2018

2nd - 6th Year 10 Work Experience
2nd - 6th Post-16 Ashbourne Residential
3rd Meet the Teacher Session
13th KS3 Assembly
17th School Production Dress Rehearsal
18th School Production
19th School Production
20th School closes

August 2018

23rd GCSE Exam Results

Annual Review Day - Friday 22nd June

On Friday 22nd June the school will be holding annual reviews for the majority of students. The school will be closed for normal lessons, but those students whose reviews are taking place will be invited into school with parents/carers for those meetings.

I understand this may cause some inconvenience for families, but this is an important process that we are required to carry out by law and we have determined that this is the most efficient and effective way of achieving the necessary outcome.

Thank you for your support.

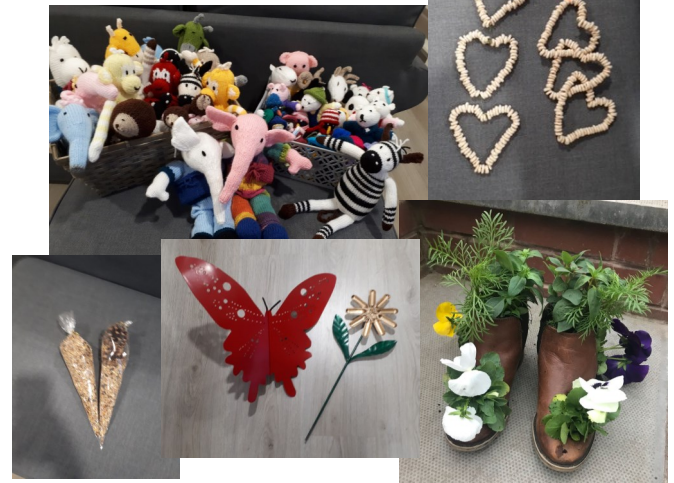
Mr Hawksworth
Headteacher

Home & Garden Show, Lichfield, 12th - 13th May

Friends of Queen's Croft will have a stall at the Home and Garden Show on Saturday 12th and Sunday 13th May. We will be located by Ego Restaurant. Please come along and support us.



Mrs Gregory
Friends of Queen's Croft



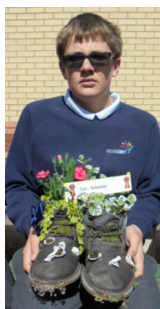
Plant a Pair

Thank you to all those who entered the 'plant a pair' competition. The results are as follows:



1st prize Mitchell, Post-16
2nd prize Sebastian, Year 7
3rd prize Libby, Year 9
Runners up Gemma, Year 11
Joshua, Year 8

Mrs Gregory
Friends of Queen's Croft



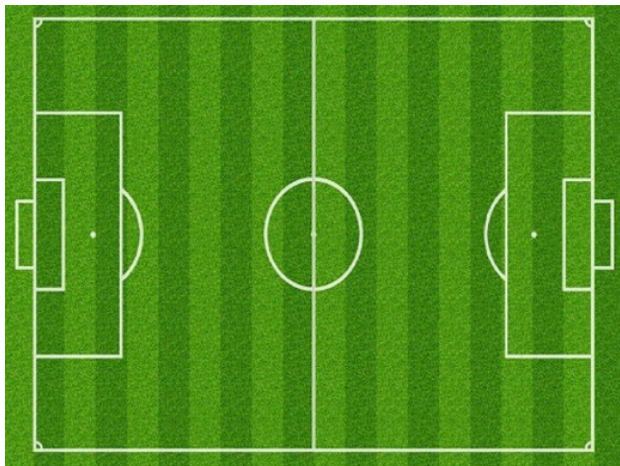
General Data Protection Regulations (GDPR)

GDPR is new legislation which comes into effect on 25th May 2018. It gives greater control to individuals and will bring about better security and transparency in how data is used. Our updated Data Protection Policy and Privacy Notices are available on the school website and detail what data we collect, how we use it, and why we need it. You will receive a letter in due course giving more information about the GDPR and seeking your consent for use of photographs in school.

8G Maths

Where is the maths in this picture? 8G have found many different areas of maths including: shapes, pattern, symmetry, right angles etc. We would like to set you a challenge:

How many right angles can you find in this picture?



(Right angles are an angle of 90° , as in a corner of a square, or formed by dividing a circle into quarters).

8G will be interested to find out how many you found.

Mrs Bradbury
Maths Coordinator

Calling all design experts!

We are looking to produce special certificates for 'Amazing Maths'.

Could you design a maths certificate which could be used throughout Queen's Croft?



The certificate can be designed in any colour using your choice of media but no larger than A4. Remember to include a space for a Name and Date (write your name on the back of the design).

Please pass your designs to your form tutor or directly to Miss Bradbury.

Happy designing!

Mrs Bradbury
Maths Coordinator

Bikeability

This week some pupils from Key Stage 3 have taken part in a Bikeability level 2 course. They had to cycle on single lane roads and learned how to use different types of junctions. All the pupils involved listened to the instructors and grew in confidence as the sessions continued. They had to overcome different challenges when out on the road, such as passing parked cars.

Although each pupil achieved a great deal from the course, it was clearly explained to them that, as parents and carers, you have the final say when your child wants to go out and ride their bike.

Mr Huckfield
HLTA

Makaton Taster Session and Coffee Afternoon



Kind

Monday 21st May 1pm to 3pm

Queen's Croft High School

For Parents and Carers & Family Members

This is a great opportunity to understand more about

Makaton and learn some signs.

Please phone the school on 01543 227245

if you would like to book a place.

There are limited spaces

Gemma Rhodes



HLTA Communication and Interaction & Makaton Regional Tutor



Makaton Sign of the Week



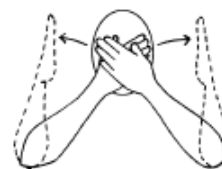
Sign of the Week

7th - 13th May 2018

This week's sign is Day!

Join in with our Sign of the Week. Make and share your own video using the hashtag #wetalkmakaton to appear on our video wall on wetalkmakaton.org

Day



Gradually uncover eyes

Day



We have provided you with these signs and/or symbols free of charge. With your help The Makaton Charity can help more people communicate, please donate online at justgiving.com/makaton.

Makaton Symbols and Signs graphics © The Makaton Charity 2018 makaton.org

Let's talk
Makaton

© The Makaton Charity 2018

The Makaton Charity
Worwood House
Farnborough
Hampshire GU14 7LP

01256 405760
info@makaton.org
makaton.org

A Charitable Company Limited by Guarantee, Registered in England and Wales, Registered Office: 89, Church Lane, Farnham, Surrey GU14 7LP, Registered Charity No. 1029843, Registered Company No. 14281014.

Learn a new word every week and be inspired to get signing via the following link:

<https://wetalkmakaton.org/>

New Arrivals

We now have chicks in the Science lab that have hatched. They will be in school Mondays to Wednesdays so we can watch them grow and change.

Mrs Olliffe
Science Coordinator

